



MYSTIQ BAY

PUNTA CANA

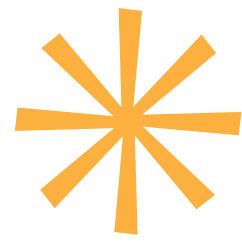


Get to know the most emblematic condo proposal on the market.

Combining the modernity of contemporary spaces integrated to a great **oasis style pool**, where the greenery and earth tones will make of your stay a pleasant experience.

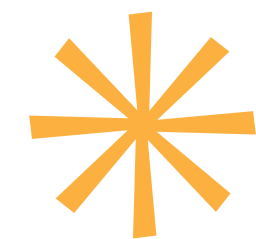
Plus a complete view to one of the most amazing golf courses in **Bávaro-Punta Cana**.





MYSTIC BAY is located in the gated community of **White Sands**, one of the few complex with private access to one of the greatest beaches known for having the most amazing atmosphere, turquoise colored water and soft sand.

Not leaving behind, the presence of four hotel chains that make the community a complete familiar and safe environment. It adjoins to one of the world-class golf courses **right next to the Iberostar hotel**, which can be seen from the 3rd level of the condos.





HEAVEN IN PARADISE

Let's start with the elements: water and earth. Will make of this project a great visual attraction that will inspire those who visit it, **to connect with nature.**

The natural and paradisiacal aura will be full of an earthy color palette, mixed textures and by respecting the vegetation it will give the feeling of spaciousness and complete integration with the environment. Without leaving aside the accessibility to shops, restaurants, entertainment centers, among others. **A space that encircles a complete experience to create unforgettable memories.**

NEARBY ATTRACTIONS



Punta Cana
International Airport

21min



Blue Mall

18min



Downtown Punta
Cana

11min



White Sands Beach

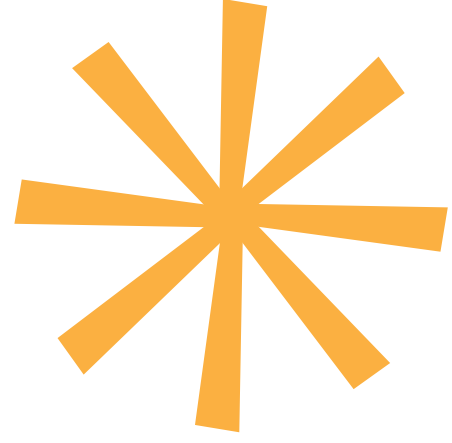
4min



Coco Bongo

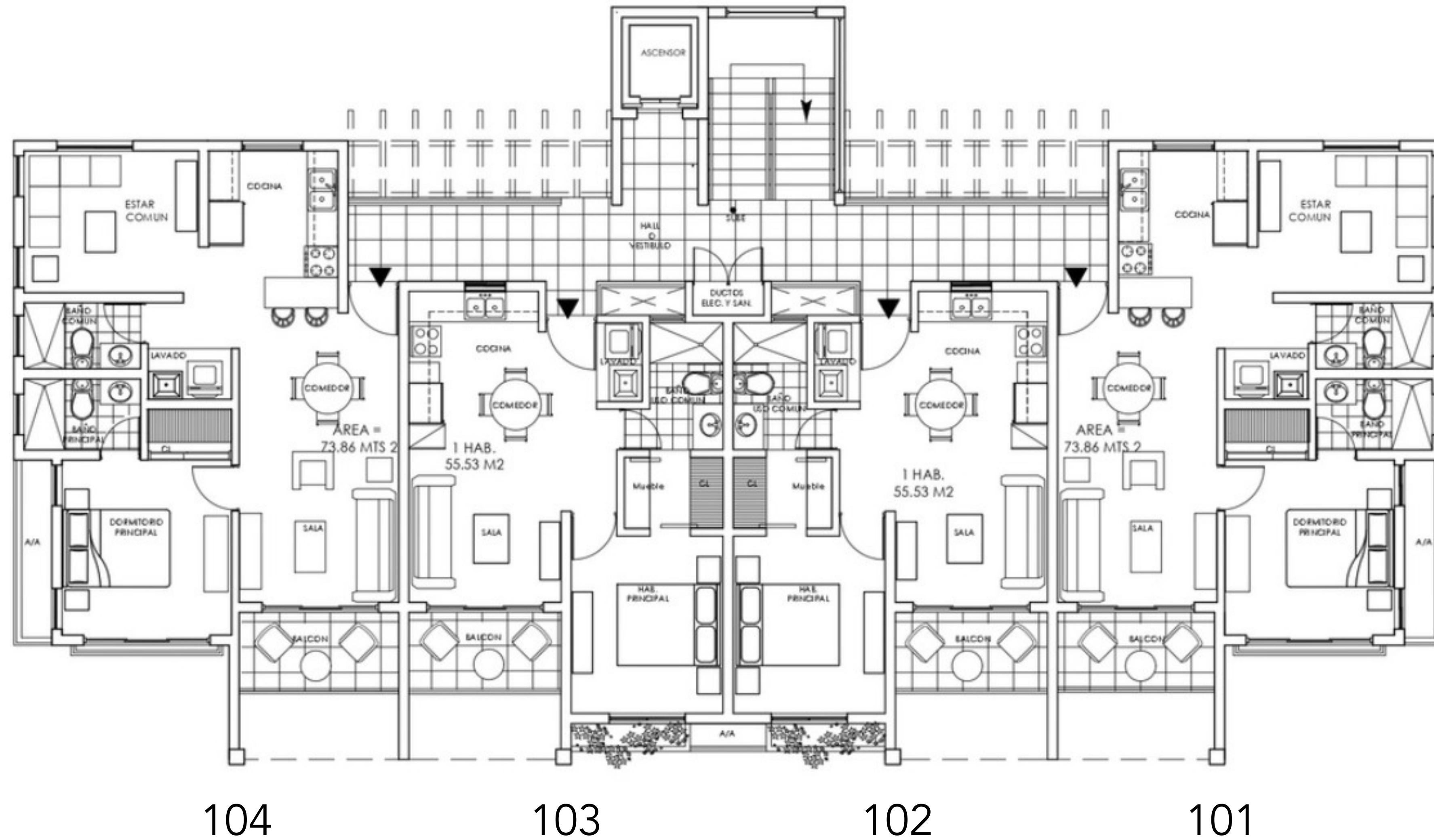
11min

MASTER PLAN





ARCHITECTURAL FLOOR PLAN SWIM-UP

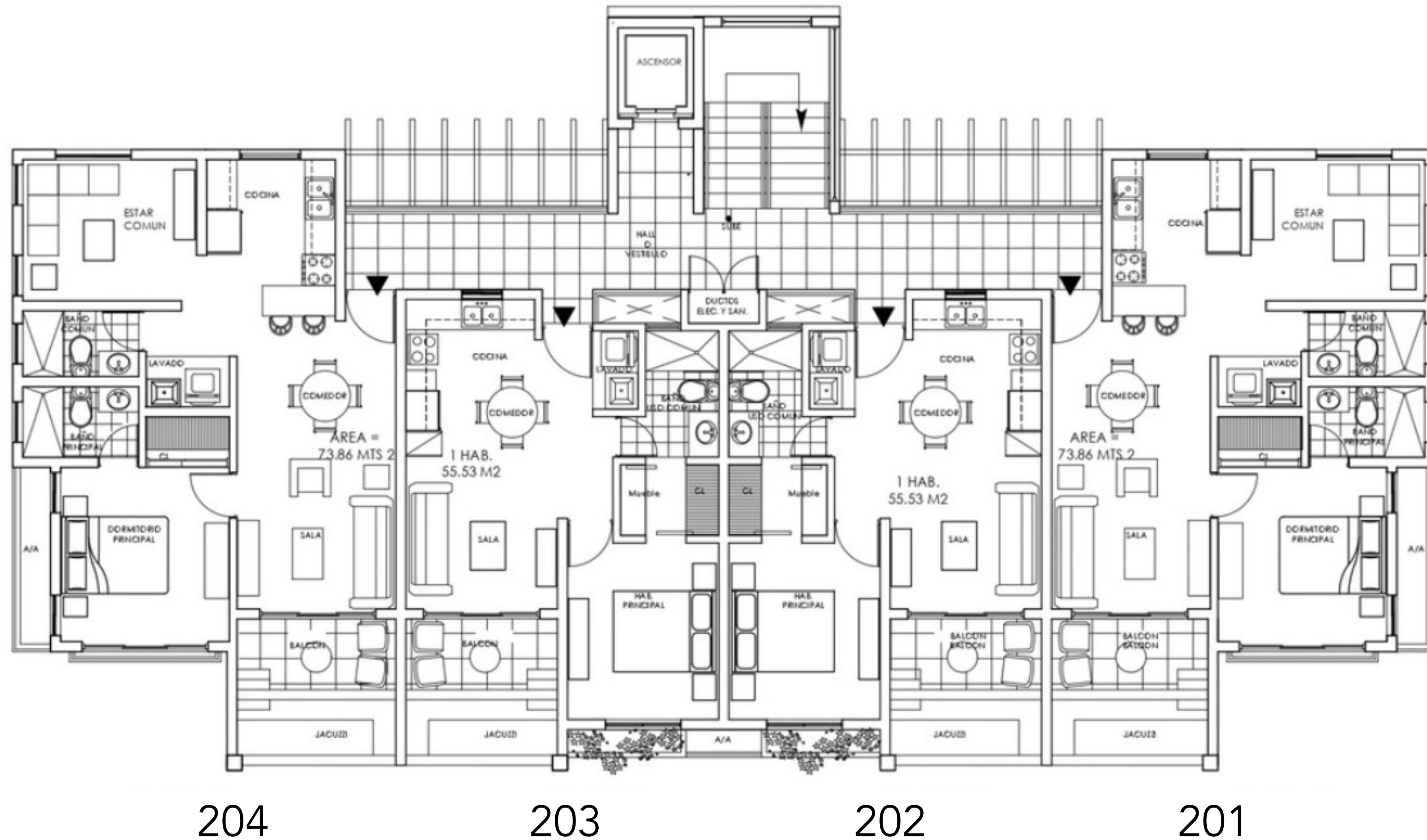




This image is a graphic representation of the project, the final design, its details and setting elements are subject to changes and/or modifications.



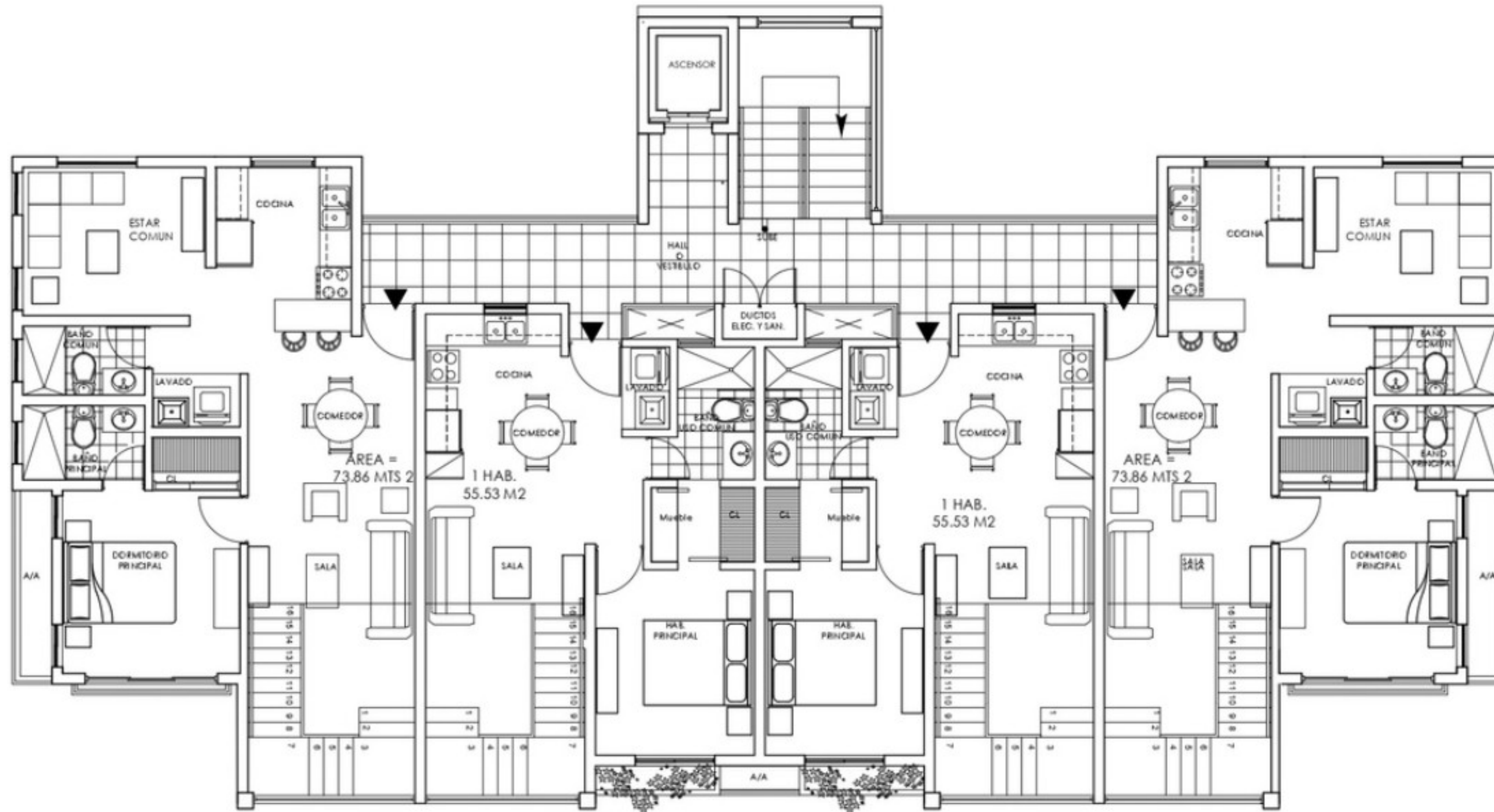
ARCHITECTURAL FLOOR PLAN PICUZZI





This image is a graphic representation of the project, the final design, it's details and setting elements are subject to changes and/or modifications.

ARCHITECTURAL FLOOR PLAN PENTHOUSE



PH-04

PH-03

PH-02

PH-01

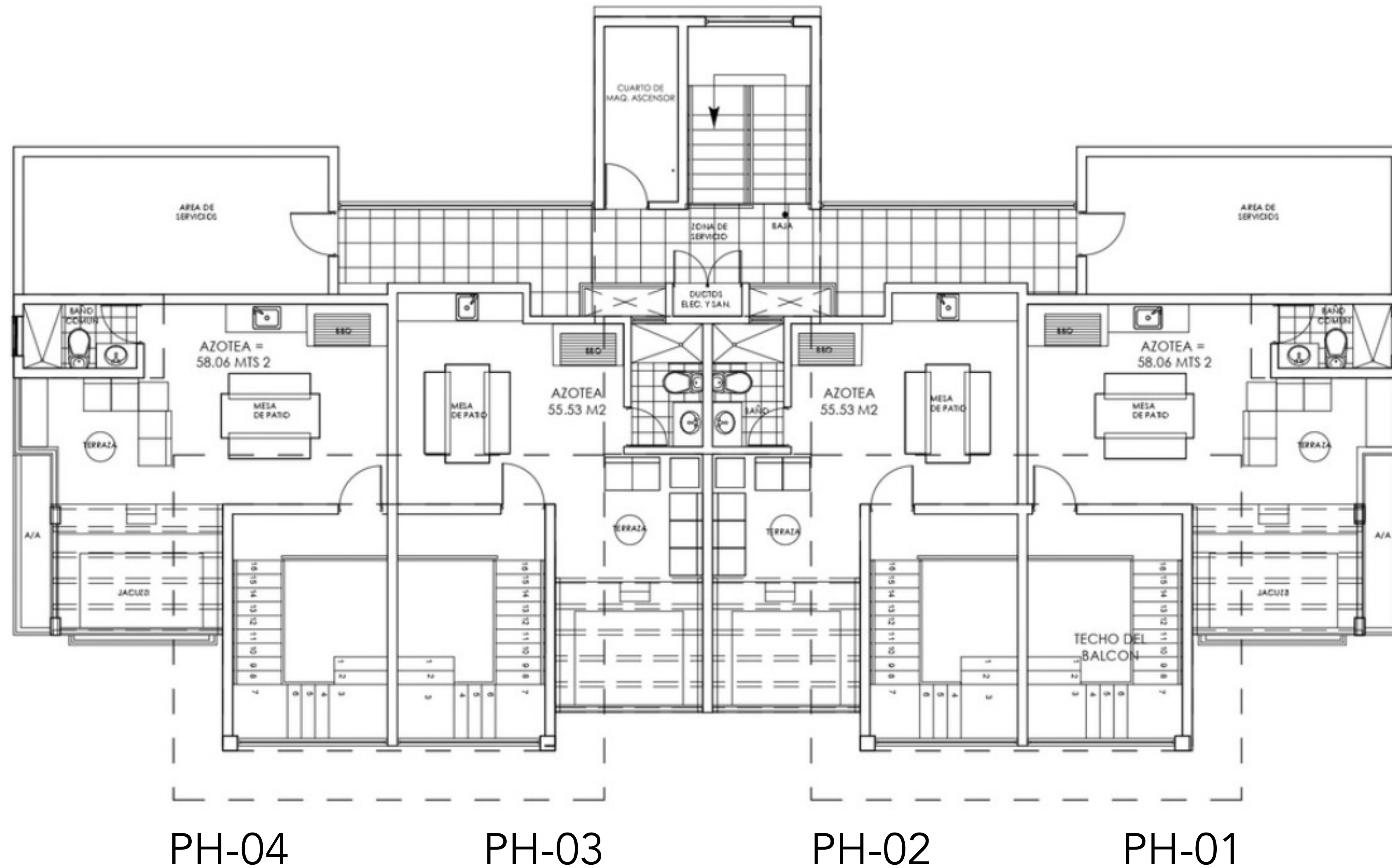




This image is a graphic representation of the project, the final design, its details and setting elements are subject to changes and/or modifications.

ARCHITECTURAL FLOOR PLAN

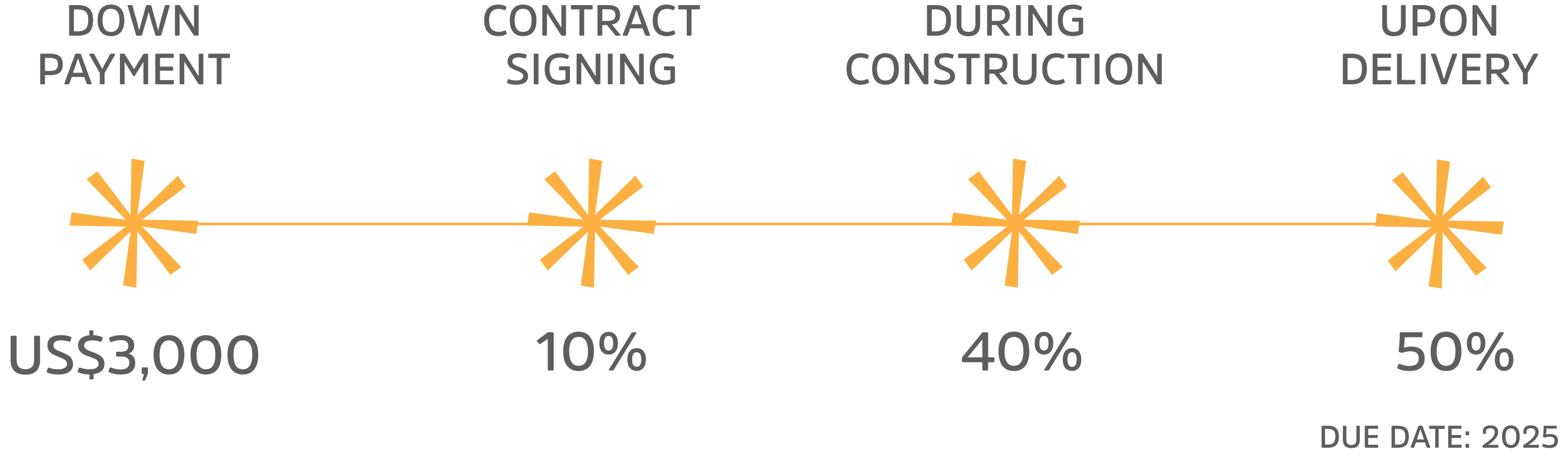
PENTHOUSE TERRACE







PAYMENT PLAN







MYSTIQ BAY

PUNTA CANA